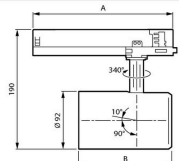


Trade	Flux	CCT	Optic	A (mm)
PSU	205	840	HNB/HMB/HVBR/HVVR/HOVL/HHOVL	158
	495	PW930	NB/MB/WB/VVBR/OVL	162
DIA				251
DIA.VLC			All	253
WA				224



Flux	CCT	B (mm)
275	FMT/Rose/R	130
295	FR/po930	149
495		



Specifications Philips LED Tracklight GreenSpace Evo Projector White 39.5W 4900lm 41x80D - 830 Warm White

[View Product](#)

General Information

SKU	251908
EAN	8720169835030
Brand	Philips
Manufacturer Name	ST333T 49S/830 PSU WB WH481
Any Lamp all-in warranty	5 Years
Average Lifetime (h)	50000

Technical Information

Technology	LED Integrated
Wattage	39.5
Replaces (Watt)	70
Voltage (V)	220-240
Dimmable	Not Dimmable
Colour Code	830 Warm White
Colour temperature (Kelvin)	3000 Warm White
Colour Rendering (Ra)	80-89
Colour of Light	White
Light colour options	Single Color
Luminous Flux (Lumen)	4900
Luminous Efficacy (lm/W)	124

Emergency Lighting	No Emergency Unit
--------------------	-------------------

Beam Angle (degree)	41x80
---------------------	-------

Power factor	>0.90
--------------	-------

Product Type Category	LED Trackspot
-----------------------	---------------

Fixture Information

Mounting Method	Rail
-----------------	------

Operating Temperature	0 to +25
-----------------------	----------

IP-rating	IP20
-----------	------

Impact Protection (IK)	IK02 - 0.20 joule
------------------------	-------------------

Housing	Plastic
---------	---------

Colour of the Fixture	White
-----------------------	-------

Colour of material	White
--------------------	-------

Dimensions

Length (mm)	162
-------------	-----

Width (mm)	92
------------	----

Height (mm)	190
-------------	-----

Sensor Information

Type of sensor	No Sensor
----------------	-----------

Why Any-lamp?

 Order from the **largest lighting specialist** in Europe  **Customised** quotation

 Up to **7 years warranty**  **Easy** return process